



Benzie-Leelanau

DISTRICT HEALTH DEPARTMENT

CARING FOR OUR COMMUNITIES

ANNUAL REPORT

OCTOBER 1, 2017-
SEPTEMBER 30, 2018

Benzie-Leelanau
District Health
Department

Phone: 231-882-4409

Website: www.bldhd.org

Email: www.bldhd.org/contact

Message from the Health Officer

Greetings! We are proud to present the 2017-2018 Annual Report for the Benzie Leelanau District Health Department. In developing this year's report, we have gone "back to basics"! As you browse through the pages that follow you will notice a focus on Essential Public Health Services. This is the invisible force that is upholding and protecting the basic elements of life that many people take for granted. Because of Public Health, kids no longer die of polio and diphtheria thanks to effective vaccines, death related to lung cancer and heart disease is dramatically reduced, illness due to contaminated food and water has greatly declined, work-related deaths and occupational injuries have significantly decreased, and air quality in Michigan bars and restaurants has greatly improved. Another way we are demonstrating a "back to basics" approach is through the linkages throughout our programs where we focus on assuring that all individuals and families are able to meet their basic needs such as housing, transportation, and access to healthy food. We know that even the most advanced medical care can't help us achieve good health until these most basic needs can be met. We know that not everyone starts from the same place and it is in understanding these unique circumstances that we can create the healthiest community in which all can live, work, and play in good health.

We are grateful for the support and guidance of our Board of Health and for a staff of dedicated professionals who serve our families and communities each day. It is our hope that you will recognize their efforts in the pages and highlights that follow!

In good health!

Lisa Peacock, Health Officer

Joshua Meyerson, Medical Director

Administration Team

- Medical Director
Joshua Meyerson, MD, MPH
- Health Officer
Lisa Peacock, MSN, RN, WHNP-BC
- Director of Personal Health
Michelle Klein, RN, MA, PH-C
- Personal Health Supervisor
Debbie Aldridge, R.N.
- Director of Administrative Services
Dodie Putney, B.S.
- Environmental Health Director
Tom Fountain, R.S

Board of Health

- Chairperson
Melinda Lautner
- Vice Chairperson
Gary Sauer
- Members
Carolyn Rentenbach
Casey Noonan
Dr. George Ryckman
Roger Griner

Mandated Essential Public Health Services



Food Protection

2017-2018: 405 Restaurant Inspections, 65 Food License/Temporary License Issued, 6 Follow up Inspections to Foodborne Illness



Immunization

2017-2018: 1544 Immunizations Administered



Private/Non-Community Water Supply

2017-2018: 349 Well Permits Issued, 1,168 Water Test Performed,



Hearing Screening

2017-2018:
1561 Children screened



On-Site Sewage Disposal

2017-2018: 438 Sewer Permits Issued,



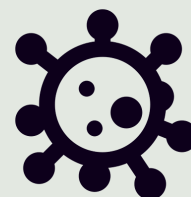
Vision Screening

2017-2018:
2635 Children screened



STD Control & Prevention

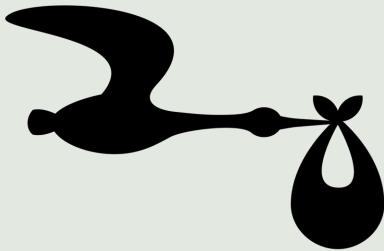
2017-2018:
113 Cases Reported



Infectious Disease Control

2017-2018: 198 Communicable diseases investigated

Personal Health Non-Mandated Programs and Services



Healthy Futures
2017-2018: 165 Families Enrolled.
108 Home Visits Done



Women, Infants and Children (WIC)
Program
2017-2018: 1323 Women, Infants, and
Children Served, 147 Lead Test
Performed, and 134 Fluoride Applied



Maternal Infant Health Program
2017-2018: 213 Moms/Babies Enrolled and
Provided 1242 Visits



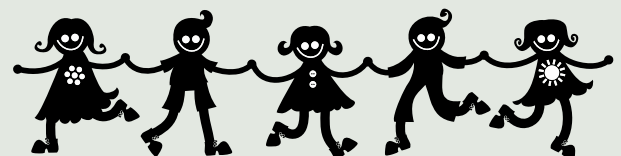
Community Connections
2017-2018: 1140 Referrals.
3082 Visits/Phone Calls



Reproductive Health
2017-2018: 89 Clients, 327 visits, and 8
BCCCP visits.



Worksite Wellness
2017-2018: 3 Worksites



Children's Special
Health Care Services
2017-2018: 149 Clients Served

Personal Health Highlight

The Community Connections Program is staffed by a team of nurses, social workers, and community health workers who assist clients in accessing resources that support health.

Examples includes connecting and assisting clients in obtaining:

A Primary health care or Dental Home
Behavioral health or other specialists providers
Financial assistance for medical care or Outstanding medical bills
Transportation
Health Insurance or other DHS Applications
Housing
GED or College Programs
Employment
Access to Food, Household Items, Clothing, and other basic needs



What our Community Connections clients said:

“My Community Connections worker helped me apply for health insurance and food assistance. I can finally go to the dentist.”

“The Community Connections nurse helped me find an apartment. And then she found donated furniture I could use.”

“I am now enrolled in college classes. I never thought I could do this until my Community Connections Social Worker helped me apply and find scholarships.”

Environmental Health Non-Mandated Programs and Services



116 Vacant Land Evaluations-
Perk Tests



23 Children's camp, Foster care, and
Daycare Facility Inspections



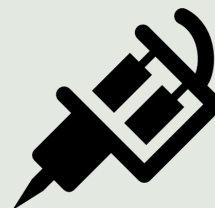
42 Swimming Pool and Spa Inspections,
Swimming Beach Monitoring – 11
beaches for 13 weeks (Late June through
Mid-September)



358 Well and Septic System Inspections



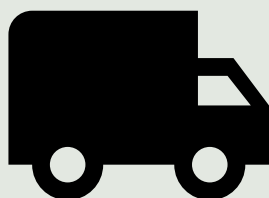
29- Campground Inspections



2- Tattoo Parlor Inspections



12 Suspected Rabies Animal Test
Submissions



19 Septage Hauling Vehicle
Inspections and 14 Septage Receiving
Facility Inspections

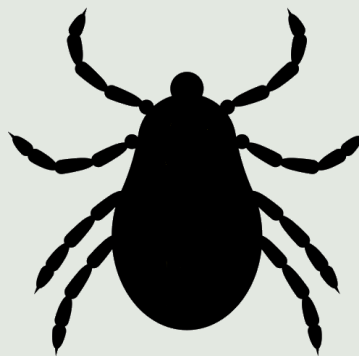


Emergency Preparedness

Environmental Health Highlight

The Environmental Health division of the Benzie Leelanau District Health Department provides many services to assure a safe environment for our community.

Food Service Inspections
Children's Camp, Foster Care, Daycare Facility Inspections
Swimming Pool/Spa Inspections
Campground Inspections
Swimming Beach Monitoring
Septage Hauling Vehicle Inspections
Septage Receiving Facility Inspections
Tattoo Parlor Inspections
Noncommunity Water Supply Inspections
Suspected Rabid Animal Test Submission
Emerging Disease Surveillance (Ticks, Mosquitoes, Etc.)



Environmental Health Stories:

"Our health department nurse contacted their Environmental Health staff when we had a terrible problem with our septic system in the middle of winter. We didn't know what to do and didn't have any money to pay for repairs. The Environmental Health Sanitarian figured out how to fix the problem and helped us get financial help to get it fixed as quickly as possible."

"The Benzie-Leelanau District Health Department staff helped food pantry staff learn about proper food storage and handling so we could be sure we were doing things correctly to protect our customers"

2017-2018 Financial Summary

