



ANNUAL REPORT 2017

A Year of Community Connections

Benzie-Leelanau District Health Department

Ph: 231-882-4409

website: <http://www.bldhd.org/> email: <http://www.bldhd.org/contact>



TABLE OF CONTENTS

A Message from the Health Officer and Medical Director	3
Mission-Statement	4
Authority	4
Public Health Services.....	5
2017 Board of Health Members	6
Organizational Structure.....	7
2017 A Year of Community Connections.....	8
Financial Summary.....	9
Notable Programs Activities	10
Administration	10
Personal Health.....	11
Environmental Health.....	12
Emergency Preparedness	13
2017 Service Records.....	14
Reportable Communicable Diseases (3 yrs.)	15
Employee Recognitions	16

A MESSAGE FROM THE HEALTH OFFICER AND MEDICAL DIRECTOR

It is our pleasure to present the *Benzie-Leelanau District Health Department 2017 Annual Report* to the community! As you explore the pages that follow we hope that you can feel the enthusiasm of our dedicated staff for the many ways that they serve the residents of Benzie and Leelanau counties each day.

It is becoming more apparent that there are major drivers of illness and death which are not necessarily medical, and we must shift our approach to identify and address these root causes which often include social determinants of health such as housing, transportation and food insecurity. The circumstances in which people live have a direct and important effect on their health. In fact, it's often said that our zip code is more important than our genetic code in determining our lifelong health. A healthy community requires strong and collaborative relationships among those charged with its care. The evolving role of Public Health as a "Chief Health Strategist" within a community recognizes the importance of partnerships across sectors and requires the health department to rise to the challenge to engage, inspire, and partner to achieve the healthiest communities!

Looking back on 2017, we see so many examples of our progress toward this goal. We are constantly striving to achieve the highest level of excellence and as a Chief Health Strategist we know that the heart of this work lies in innovation, alignment of vision and values, and committed partnership. Mobilizing community action beyond our direct reach, fully participating in partnerships with our peers and colleagues, and engaging in data driven decisions and initiatives are just a few of the strategies at work to achieve the highest impact. Both the *Northern Michigan Public Health Alliance* and the *Northern Michigan Community Health Innovation Region* are strong examples of the collective impact of partnership.

We are hard at work protecting the environment, providing care and services to our most vulnerable residents, and promoting health and wellness through many programs focused on prevention. Our ability to respond to emerging health threats such as Hepatitis A and environmental contamination depends upon our strong foundation.

The *Benzie-Leelanau District Health Department* has a proven reputation for its ability to weather a constantly changing environment and limited resources. In 2017 we have demonstrated our ability to reach beyond our own walls and provide leadership for several collaborative projects. We can only do this through the support of our dedicated Board of Health members who believe in and support our mission as well as the work of our highly qualified staff. We hope that you enjoy reflecting on their work as much as we have.

In Good Health,



Lisa Peacock, Health Officer



Joshua Meyerson, Medical Director

MISSION-STATEMENT

THE MISSION OF THE BENZIE-LEELANAU DISTRICT HEALTH DEPARTMENT IS TO PREVENT DISEASE, PROLONG LIFE, AND PROMOTE PUBLIC HEALTH THROUGH:

- Prevention and control of environmental health hazards
- Prevention and control of diseases
- Prevention and control of health problems of particularly vulnerable populations
- Development of health care facilities and health services delivery systems
- Regulation of health care facilities and health services systems to the extent provided by law

AUTHORITY

The Benzie-Leelanau District Health Department was established in 1996 as a district health department in accordance to *Part 24, Sec 333.2415 of Act 368 of 1978, the Michigan Public Health Code*, where two or more counties may unite to create a district health department by a majority vote of each governing entity – Benzie County and Leelanau County. The department is given the powers and duties through *Act 368* to:

- Implement and enforce laws for which responsibility is vested in the local health department.
- Utilize vital and health statistics and provide for epidemiological and other research studies for protecting the public health.
- Make investigations and inquiries as to the causes of disease and especially of epidemics; the causes of morbidity and mortality; and the causes, prevention, and control of environmental health hazards, nuisances, and sources of illness.
- Plan, implement, and evaluate health education through the provision of expert technical assistance, or financial support, or both.
- Provide or demonstrate the provision of required services as set forth in *section 2473(2)*.
- Have powers necessary or appropriate to perform the duties and exercise the powers given by law to the local health officer and which are not otherwise prohibited by law.
- Plan, implement, and evaluate nutrition services by provision of expert technical assistance or financial support, or both.

PUBLIC HEALTH SERVICES

PERSONAL HEALTH

Maternal and Infant Health Program
 Reproductive Health
 Sexually Transmitted Disease Screening
 HIV Testing & Counseling
 TB (Tuberculosis Testing)
 Hearing & Vision Screening
 Woman Infants & Children (WIC)
 Breastfeeding Guidance
 Immunizations
 Children's Special Health Care Services
 Communicable Disease Follow-up
 Lead Management
 Fluoride Treatment and Dental Screening
 Community Health Education and Promotion

ENVIRONMENTAL HEALTH

Septic and Well Water Installation Inspections
 Monitoring of Type II Water Supply Systems
 Fixed and Temporary Food Establishments Inspections
 Inspections of Public Pools, Campgrounds, and FIA Facilities
 Monitoring of Environmental (Vector-Borne) Diseases

EMERGENCY PREPAREDNESS

Mass Dispensing and Distribution of Pharmaceuticals and Medical Supplies
 Emergency Operations Coordination
 Threat and Hazard Vulnerability Risk Assessments
 Emergency Public Information and Warning
 Information Sharing
 Responder Safety and Health

SERVICE & OFFICE LOCATIONS

Benzie County Office

6051 Frankfort Hwy, Ste 100
 Benzonia, MI 49616
 Phone: 231-882-4409
 Fax: 231-882-2204
 Hrs.: M-F 8am-4:30pm
 Closed for lunch: 12 – 1pm

Leelanau County Office

7401 E. Duck Lake Rd.
 Lake Leelanau, MI 49653
 Phone: 231-256-0200
 Fax: 231-256-0225
 Hrs.: M-F 8am-4:30pm
 Closed for lunch: 12 – 1pm

2017 BOARD OF HEALTH MEMBERS

Melinda Lautner, Chairperson

Leelanau County Board of Commissioners

Term: 1/1/2013 - Present

Gary Sauer, Vice Chairperson

Benzie County Board of Commissioners

Term: 1/1/2015 - Present

Roger Griner

Benzie County Board of Commissioners

Term: 1/1/2014 - Present

Casey Noonan

Leelanau County Board of Commissioners

Term: 1/1/2017 - Present

Dr. George Ryckman

Benzie County Citizen at Large*

Term: 1/1/2017 - 12/31/2018

Carolyn Rentenbach

Leelanau County Citizen at Large*

Term: 1/1/2017 - 12/31/2018

* Serves two-year term

2017 Board of Health Meeting Dates

January 26, 2017

August 3, 2017

March 23, 2017

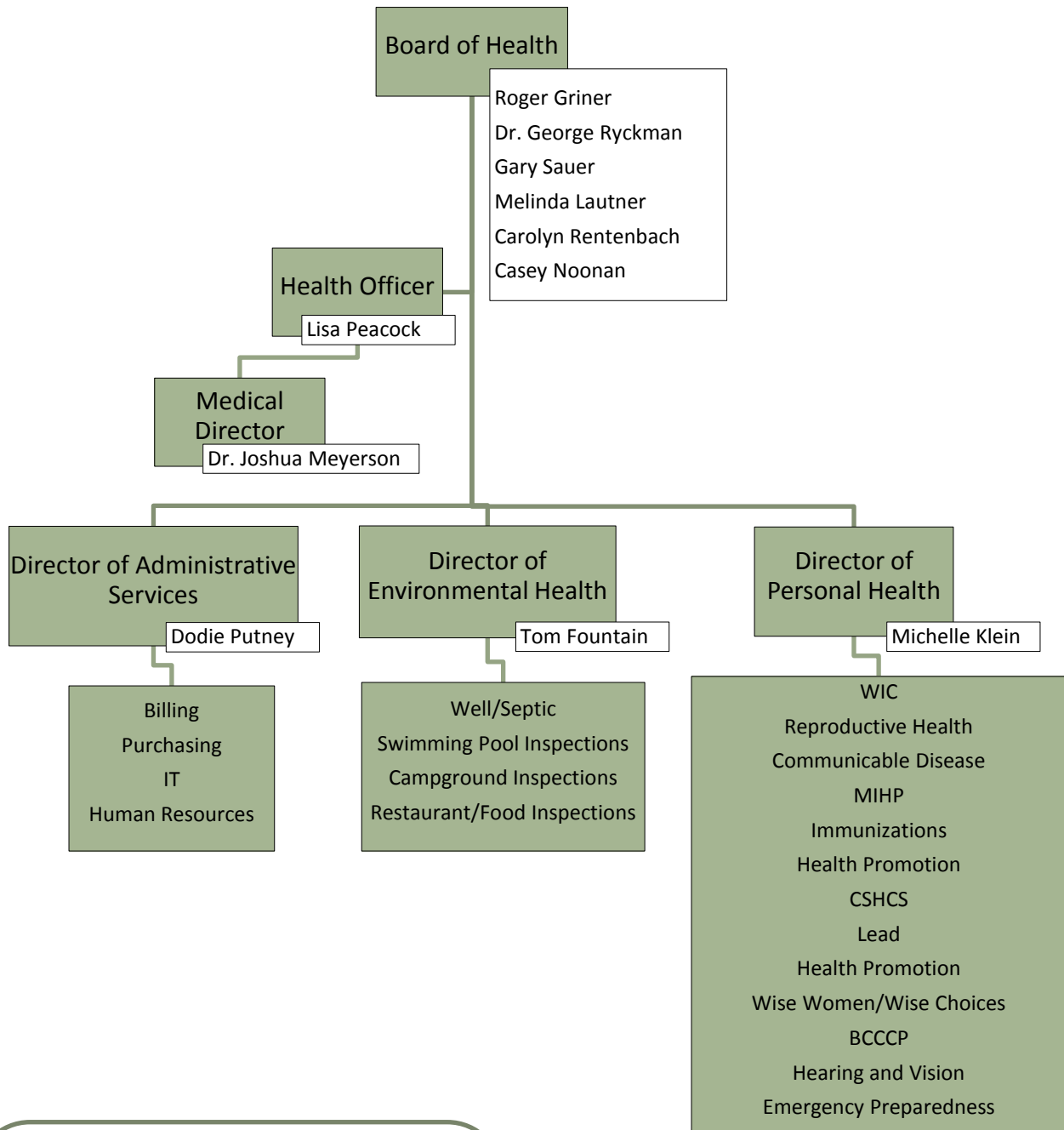
September 28, 2017

May 25, 2017

November 16, 2017

Meetings are held at either Benzie or Leelanau office starting at 4:00pm. Copies of agendas and meeting minutes are available online at: <http://www.bldhd.org/board-of-health>

ORGANIZATIONAL STRUCTURE



2017 Employee Stats

Total No. of Employees: 29

No. of Personal Health staff: 18*

No. of Environmental Health staff: 8

No. of Administrative Services staff: 3

* Includes Emergency Preparedness Staff

2017 A YEAR OF 'COMMUNITY CONNECTIONS'

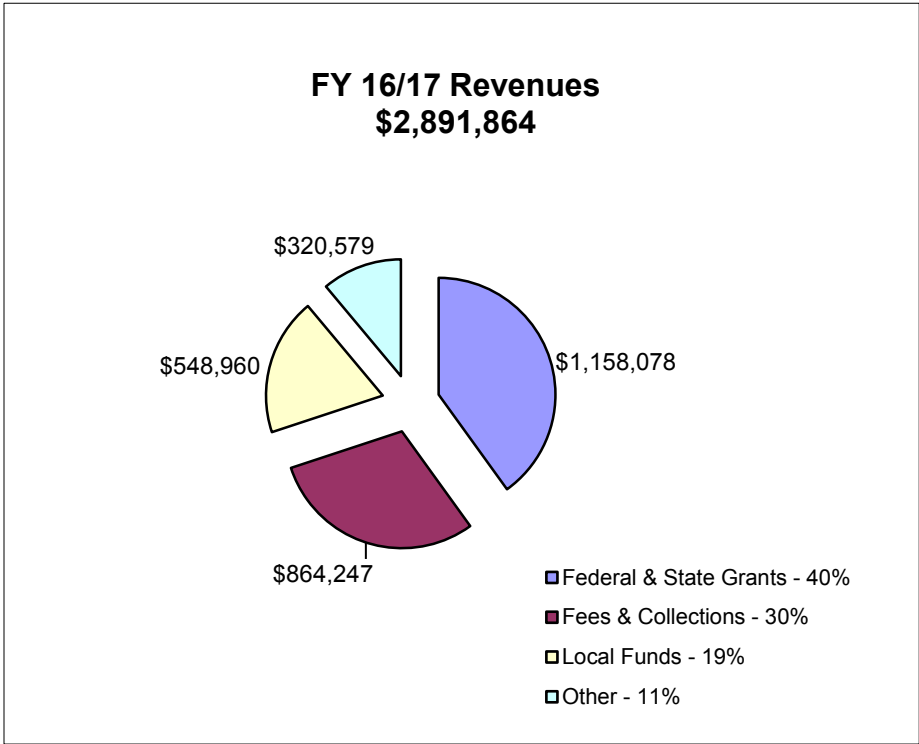
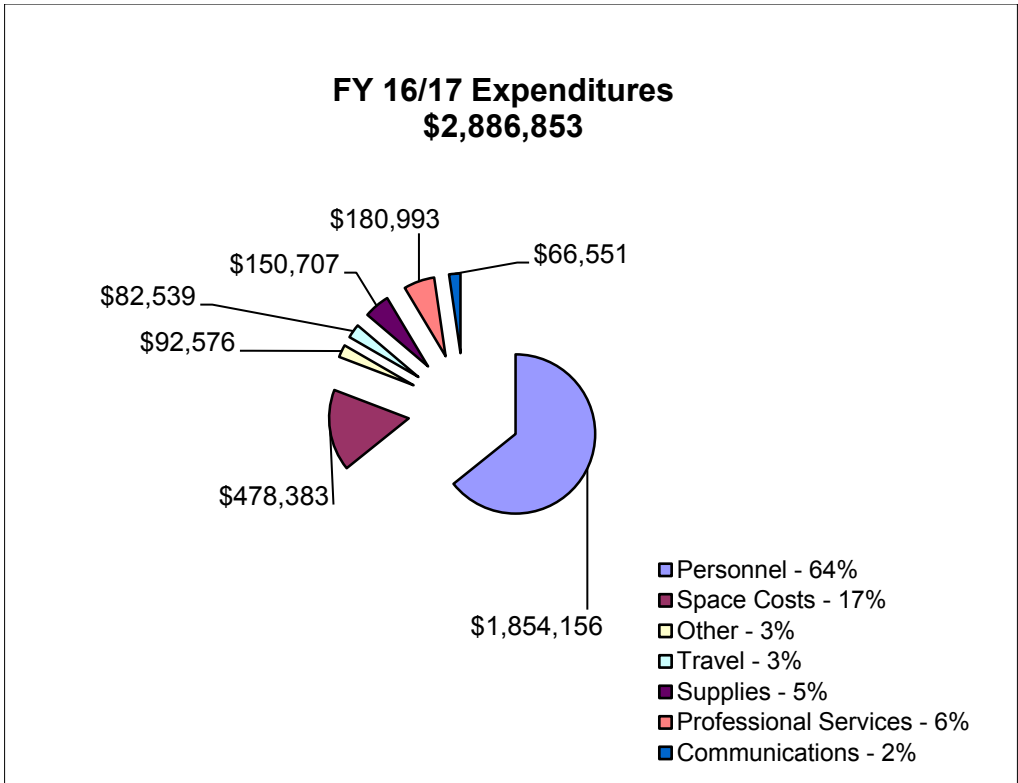
Community Health Innovation Regions (CHIRs) are one of four foundational components to the State Innovation Model, a four-year, \$70M federal grant awarded to the Michigan Department of Health and Human Services (MDHHS). There are five Community Health Innovations Regions in the State, including the 10-county Northern Michigan Community Health Innovation Region. According to Michigan's Blueprint for Healthcare Innovation, CHIRs are geographic areas where partners act cohesively with a broad-based vision for region-wide impact, to make the environment healthier and to connect health services with relevant community services. The goal for all CHIRs is to achieve the "Triple Aim": better health at a lower cost with improved satisfaction.

In August of 2017, Community Connections accepted our first community referrals. Community Connections is a clinical community linkages model, operating as a part of the CHIR, for linking patients who have health related social needs to resources in the community. It features an electronic patient assessment that identifies patients with problems accessing things like healthcare, food insecurity, housing, transportation, and other social determinants of health. This assessment is administered primarily in patient centered medical homes, but referrals can also come from community organizations. Patient/clients who need linkages are referred to the Community Connections Hub based on where they live.

There are 3 local Hubs in our 10 county CHIR region. The Benzie-Leelanau District Health Department staffs the Grand Traverse Regional Hub, which serves Benzie, Grand Traverse and Leelanau Counties. Each Hub is staffed by a HUB Coordinator, Registered Nurse, Social Worker, Community Health Worker, and Call Center Operator. As part of the kick off for this program, 4 Public Health Techs were sent to be trained as Community Health Workers. This was an intensive course, requiring 166 hours of training, with 8 core competencies. The purpose of the training was to prepare them to effectively support and assist individuals to achieve optimal levels of health and well-being.

From a Community Connections Client ~ *"Thanks so much for all your help, I loved that you could come to my house to help me fill out applications, that made it so much easier"*

FINANCIAL SUMMARY



NOTABLE PROGRAM ACTIVITIES IN 2017

Administration

Strategic Planning: In December, staff participated in a strategic planning session using the Technology of Participation Process. Over the year, the Department developed its 3-year Strategic Plan noting a variety of activities including improving employee health and safety, cross-training staff in multiple roles, and increasing public outreach.

Certificate of Accreditation: The Department received a passing score of 95% towards its accreditation as a local public health department through the Michigan Local Public Health Accreditation Program. The program is a collaborative effort between several agencies with emphasis in public health and environmental health.



Benzie Office Renovations: The renovation of the Benzie Community Resource Center was finalized with NMHSI's Dental Clinic moving into the first floor, and Environmental Health and Administrative staff moving to the lower level. This moved allowed for a separate room dedicated for the public to come in and sit down with EH staff in reviewing site plans for septic and well installations.

New BLDHD Logo: The Department worked with the Career Tech Center in Traverse City in designing a new logo.



Support Staff:

Dodie Putney, Director of Administrative Services
 Heidi Roper, Reimbursement Specialist
 Kris Malkowski, Account Clerk

Personal Health

Community Connections: Implemented, along with other health departments in northern Michigan, a new program that connects people with specialized healthcare needs in their community as well as more guidance and assistance over the phone, and/or in-person with community resources.

SCRIPT: Began work in partnership with regional hospitals, health departments and the March of Dimes to implement the SCRIPT smoking cessation program for pregnant women. Planning and training was conducted in 2017, with full implementation to begin in 2018.

Health Systems Change Project: Began development of policies and procedures to address tobacco use for ALL health department clients, including providing nicotine replacement medications and lifestyle counseling. Full implementation of this project will begin in 2018.

Parenting Communities Partnership: Shared staff with Parenting Communities of Leelanau County to expand home visiting, playgroups, parenting education and other offerings for families who are parenting young children.

Healthy Futures: Completed a pilot project to enhance the Healthy Futures model of universal home visiting for new mothers and babies, with the goal of increasing breastfeeding support.

Maternal-Child Health Assessment: With other local health departments in Northern Michigan, completed an assessment of Maternal-Child Health. Breastfeeding duration, access to mental health services, and Smoking among pregnant women were the three priorities identified in this process.

Mom Power: Implemented the first Mom Power group in Leelanau County. This impactful, 10-week program is designed to increase attachment and enhance parenting among families at high risk for child abuse or neglect.

Continuous Quality Improvement Project: Conducted to ensure all eligible women and infants are offered enrollment in the Maternal-Infant Health Program.

Expanded Certified Lactation Consultant: Services provided by 2 additional nurses that received their IBCLC (Lactation Consultant Certification), making a total of 3 IBCLC providers at the Benzie-Leelanau District Health Department. This allows us to bill insurance for lactation support services, increases access and support for Leelanau County families.

Support Staff:

Michelle Klein, Director of Personal Health
Debbie Aldridge, Personal Health Supervisor
Autumn Jurek, Public Health Nurse
Jennifer Shafer, Public Health Nurse
Rachelle Stapleton, WIC Coordinator
Amanda Stowe, Social Worker
Birdie Besey, Public Health Nurse
Stephanie Burns, Public Health Nurse
Sharon Husted, Office Coordinator

Ruth Griner, Hearing/Vision Tech
Jennifer Flohe-Payne, WIC Counselor
Katie Hafner, WIC Counselor
Vicky Kriskywicz, Public Health Tech
Cyndi Sauer, Public Health Tech
Jan Frazee, Nurse Practitioner
Clarrisa Roman, Public Health Tech
Rachel Pomeroy, Public Health Tech

Environmental Health

Low Risk Foods Consultation: For temporary food service events, those serving “low-risk foods” are now able to receive consultation prior to the event rather than an on-site inspection at the time of the event. Food operators are educated, and the proposed operations are reviewed with a Sanitarian at the EH Office. This saves the Department time, staff availability, and financial resources which are needed in conducting on-site inspections.

MDEQ Certification: In June, the Environmental Health passed its annual audit by the Michigan Department of Environmental Quality in its non-community public water (Type 2) and residential /public (Type 3) water supply programs.

National Environmental Health Association Conference: EH staff attended the NEHA’s conference in July in Grand Rapids. This was the first time it was held in Michigan.

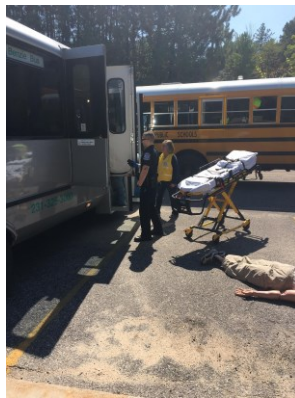
Support Staff:

Tom Fountain, Environmental Health Director
Bill Crawford, Sanitarian II – On-Site/Wells
Clay McNitt, Sanitarian II – On-Site/Wells
Eric Johnston, Sanitarian II – On-Site/Wells/Type II
Marc Grossnickle, Sanitarian II – On-Site/Wells
Tom Rademacher, Sanitarian II – Food Service
Sanna Johnson, Environmental Health Secretary (Benzie Office)
Vicki Houdek, Environmental Health Secretary (Leelanau Office)

Emergency Preparedness

Closed POD Exercise: In October, emergency preparedness staff participated with Grand Traverse Band (GTB) in exercising their plans for dispensing medications to their members in what is referred to as a *Closed Point of Dispensing* operation (Closed POD). It was an opportunity for the department to test its communication systems with GTB and practice locating supplies of medications for GTB's needs from community health and medical care providers.

Mass Casualty Exercise: In June, staff participated in Benzie County's mass casualty exercise, with Emergency Management partners, held at the Governmental Center in Benzonia. It was an opportunity to show the skills and resources that the Health Department can provide in this type of emergency, which is often overlooked. Three nurses helped in triaging patients away from the wreckage and were able to take vitals to determine if they needed emergency medical care.



PHEP Desk Training: To increase training opportunities, staff were provided with training that allowed them to remain at their desks and go through a written scenario involving a disease. The scenario provided hyperlinks to information sought through the various websites including information about the disease (*Leptospirosis*) from the CDC, a video through YouTube on Point of Dispensing (POD) operations, and descriptions of the Strategic National Stockpile on the CDC's website.

Table Top Exercise: The Health Officer, program Directors, and a few others participated in a table top exercise in which the emphasis in responding through the scenario was identifying the methods and procedures in obtaining additional staff, equipment, and resources as identified in the *Administrative Preparedness Plan*. This allowed for key decision-making staff to learn and become aware of the policies and procedures there are within the health department, as well as both Leelanau and Benzie Counties' policies, regarding procuring resources and vendor contracts.

Support Staff:

Jim Reardon, Emergency Preparedness Coordinator

2017 SERVICE RECORDS

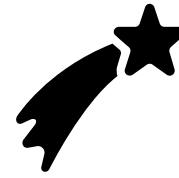
Personal Health Program	Maternal Infant Health Services	228 clients / 1,404 visits
	Women, Infant, and Children (WIC) Services	1,929 clients
	Children's Special Health Care Services	115 clients / 75 services
	Children Lead Testing	107 performed
	Immunizations	579 vaccines administered
	Healthy Futures	87 visits
	Reproductive Health	160 clients seen / 442 visits
	Hearing Screenings	1,662
	Vision Screenings	2,636
	Dental Screening/Fluoride Administration	88 children served
	Community Connections	169 client referrals made
Environmental Health Program	Vacant Property Evaluations	120
	Campground Licensing and Inspections	29
	Public Swimming Pool Licensing and Inspections	40
	Septic Pumper Truck and Disposal Site/Storage Inspections	29
	Rabies and West Nile Virus Testing	10
	Public Swimming Beach Monitoring	11
	Fixed Food Service Inspections	364
	Sewage Permits Issued	344
	Remodel Septic Reviews	35
	Point of Sale Inspections	363
	DHHS Facility Inspections	15
	Well Permits	327
	Type II Non-Community Water System Inspections	45
	Temporary Food License Inspections	75
	Follow-up Fixed Food Inspections	117
Food Service Plan Review	13	

REPORTABLE COMMUNICABLE DISEASES (3 YRS)

Disease	2017	2016	2015
Animal Bites	58	52	31
Animal Rabies (Bat)	1	0	0
Botulism	0	0	1
Campylobacter	5	2	4
Chickenpox	2	10	5
Chikungunya	0	1	0
Chlamydia	110	84	83
Coccidioidomycosis	1	1	0
Cryptosporidiosis	5	1	1
Dengue Fever	0	0	1
E. Coli	0	1	0
Ehrlichiosis Anaplasma	0	0	1
Giardiasis	5	3	1
Gonorrhea	2	3	4
Haemophilus Influenza	0	1	0
Hepatitis A	1	0	0
Hepatitis B	4	5	4
Hepatitis C	25	18	22
Histoplasmosis	2	0	5
HIV/AIDS	0	0	6
Lyme Disease	4	5	4
Measles	0	0	0
Meningitis-Aseptic	3	4	4
Meningitis-Bacterial		2	3
Mycobacterium-Non-TB	2	7	9
Pertussis	3	3	5
Salmonellosis	8	7	7
Shigellosis	3		0
Strep pneumoniae-Inv	1	6	3
Streptococcal Disease, Grp A	3	1	2
Syphilis	1	0	0
TB	0	0	0
Varicella-Zoster (VZ) infection	7	12	6

Additionally, staff were involved in monitoring and following up with a case involving Creutzfeldt-Jakob disease, one case of Hemolytic Uremic syndrome (HUS), two cases of Zika virus, and conducting a personal health assessment with a refugee.

EMPLOYEE RECOGNITIONS



Joshua Meyerson, MD was nominated and received a prestigious award from the MDHHS for recognizing his excellence in Public Health Leadership through the Hometown Hero Project.

Ruth Griner, Vicky Kriskywicz, Clarissa Roman, and Cyndi Sauer each completed a rigorous 8 week and 128 hours of trainings, including projects and exams, to receive their certification as a Community Health Worker through the Michigan Community Health Workers Training Program.

Autumn Jurek, RN and Jenny Shafer, RN received Lactation Consultant Certification.

Michelle Klein, RN received her Public Health Certificate through the University of Florida.

Cyndi Sauer, Rachel Pomeroy, and Jamie Leyland, RN were hired in as additional staff in the Personal Health Unit.

Debbie Aldridge, RN became the Department's new Community Connections Coordinator.

Tom Rademacher, RS retired after 21 years of service with the Health Department. Tom served as a Sanitarian - Food Service Coordinator for the Environmental Health Unit, establishing long-time relationships with restaurants and food establishments in making sure of safe food preparation and service throughout Benzie and Leelanau counties. **Nickolas Dow** was hired as the new Food Service Coordinator and started a few weeks before Tom's last day for Tom to take the time to train and educate Nick on all the materials and procedures he had created the past 21 years.

Jan Frazee, RN retired after 7 years with the Health Department, as a Nurse Practitioner. Jan was seen by many in the Reproductive Health Clinics in both the Lake Leelanau office and the Benzonia office.

