

Benzie-Leelanau District Health Department

2016 Annual Report



1996 - 2016



Contents

Cover Page

Mission Statement

Public Health Services

Organizational Structure

2016 Board of Health Members

Service Locations

A Message from the Health Officer

A Message from the Medical Director

Celebrating our 20th Anniversary

2016 Highlights

Financial Summary

Notable Activities in 2016

Partnerships and Collaborations

2016 Service Records

Reportable Communicable Diseases (3yrs)

Health Department Employees

Snapshots

Back Cover

Mission Statement

The mission of the Benzie-Leelanau District Health Department is to prevent disease, prolong life, and promote public health through:

- Prevention and control of environmental health hazards
- Prevention and control of diseases
- Prevention and control of health problems of particularly vulnerable populations
- Development of health care facilities and health services delivery systems
- Regulation of health care facilities and health services systems to the extent provided by law

Public Health Services

Personal Health

Maternal and Infant Health Program
Reproductive Health
Sexually Transmitted Disease Screening
HIV Testing & Counseling
TB (Tuberculosis Testing)
Hearing and Vision Screening
Women Infants and Children (WIC)
Breastfeeding Guidance
Immunizations
Children's Special Health Care Services
Communicable Disease Follow-up and
Lead management

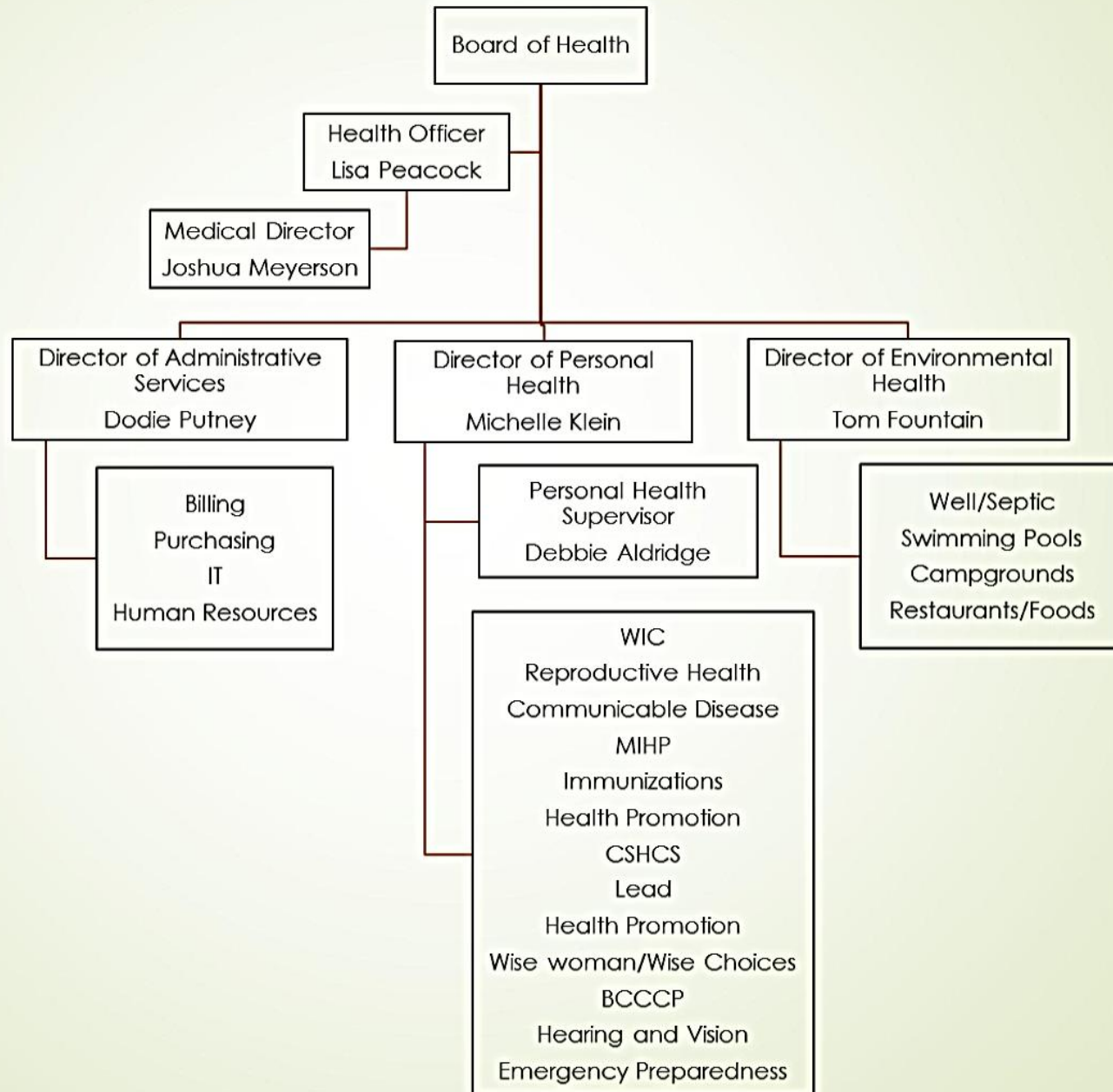
Environmental Health

Septic and Well Water Installation Inspections
Monitoring of Type II Water Supply Systems
Fixed and Temporary Food Establishments Inspections
Inspections of public pools, campgrounds, and FIA facilities
Monitoring of Environmental (Vector-Borne) Diseases.

Emergency Preparedness

Mass Dispensing and Distributing Pharmaceuticals & Supplies
Emergency Operations Coordination
Threat and Hazard Vulnerability Risk Assessments
Emergency Public Information and Warning

Organizational Structure





2016 Board of Health Members

Roger Griner, Chairperson

Benzie County Board of Commission

1/1/2014 – Current

Dr. George Ryckman

Benzie County Member at Large

2/18/2014 - Current

Gary Sauer

Benzie County Board of Commission

1/1/2015 - Current

Melinda Lautner

Leelanau County Board of Commission

1/1/2013 - Current

Carolyn Rentenbach

Leelanau County Board of Commission

1/1/2013 – 12/20/2016

Marge McCulloch

Leelanau County Member at Large

1/1/2013 – 1/20/2017

Board of Health Meeting Dates

January 28, 2016

March 24, 2016

May 26, 2016

July 28, 2016

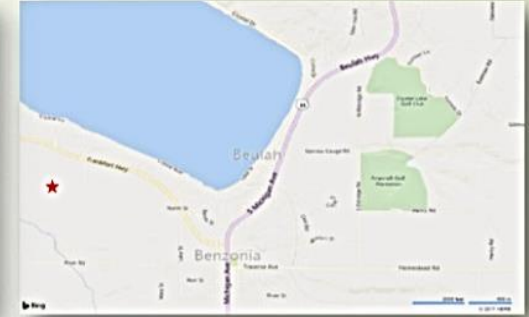
September 22, 2016

November 17, 2016

Service Locations

Benzie County Office

6051 Frankfort Hwy, Ste 100
Benzonia, MI 49616
Phone: 231-882-4409
Fax: 231-882-2204
Hrs.: M-F 8am-4:30pm
Closed for lunch: 12 – 1pm



Space shared with: Northwest Michigan Health Services, Inc., Women's Resource Center, Catholic Human Services, and Centra Wellness Network

Leelanau County Office

7401 E. Duck Lake Rd.
Lake Leelanau, MI 49653
Phone: 231-256-0200
Fax: 231-256-0225
Hrs.: M-F 8am-4:30pm
Closed for lunch: 12 – 1pm



Space shared with: Sharecare, Michigan Department of Human Services, Women's Resource Center, Leelanau Family Coordinating Council, Samaritans Closet, and Leelanau County Recycling for containers in back parking lot.

A Message from the Health Officer

As we celebrate our 20th Anniversary, I look back on 2016 with great pride in this agency which has always demonstrated excellence in the delivery of public health services in Northern Michigan. This was a year of great transition as I took over as Health Officer during the summer of 2015 and soon after Dr. Joshua Meyerson took over as Medical Director. Many months of thought and planning laid the groundwork for this cross jurisdictional sharing arrangement which resulted in shared administrative services between two exemplary health departments. The Northern Michigan Public Health Alliance, of which we are a partner along with 5 other local health departments, is a shining example of how alignment of vision and values across 25 counties can bring transformative change to a system of services. We are strengthened through partnership which in turn increases our capacity to meet the needs of our communities. This level of collaboration is infused throughout all levels of the organization with our staff working closely together not just with each other but also with their colleagues across the region, sharing and implementing best practices.

The following pages will allow a glimpse of the work that our passionate and talented staff carry out each and every day in this mission to uphold the Michigan Public Health Code. They touch our community in so many ways through direct services as well as through collaboration and partnership. Some of the examples you will see are integrated services in the Benzie Community Resource Center, the work of the Northern Michigan Environmental Health Directors workgroup, the Northern Michigan Public Health Emergency Preparedness team, as well as supporting the needs of young families through collaboration with our hospital system in the Healthy Futures program. Our Health Department is organized into three divisions: Personal Health, which includes Emergency Preparedness, Environmental Health and Administrative Services. Whether they are providing services in the clinic, in the home, in the office or out in the community, our staff touches Northern Michigan residents in important ways. I hope you enjoy this sampling of their work.

Finally, I would like to thank you to the members of our Board of Health for their ongoing support and belief in our mission over the past 20 years. Although it is inevitable that challenges and uncertainties lie ahead, I am confident that with the dedication and commitment from our Board of Health and our staff that we will be able to continue the tradition of excellence that has come to be expected from the Benzie Leelanau District Health Department.



Lisa Peacock, MSN, RN, WHNP-BC

A Message from the Medical Director

2016 was a busy year marked by agency transitions. We have kept our focus on continuing to maintain levels of service and building on the foundation and mission of our Department to promote healthy communities and families. It is also our good fortune to have staff, both experienced and new, that bring fresh ideas and an enthusiasm for public health. We are adopting a new collaborative approach with other local health departments including a shared Health Officer position, which goes along with the often spoken "do more with less" that we hear every year from our state and federal partners. It is easy to speak these words but the reality is that their burden falls on the many professionals who serve our communities every day. They are busy protecting our environment, making sure our food and water are safe, helping families and children eat nutritious foods, protecting us all against vaccine preventable diseases, investigating outbreaks, and promoting health in so many other aspects of our lives. In addition, they must always be ready to respond emerging issues as well as new and novel concerns such as Ebola or Zika virus. As we have navigated through these changes and prepare to face what the new year brings, I thank all our Board of Health members and the citizens of Benzie and Leelanau Counties for their support and dedication to protecting and improving public health in Northern Michigan.



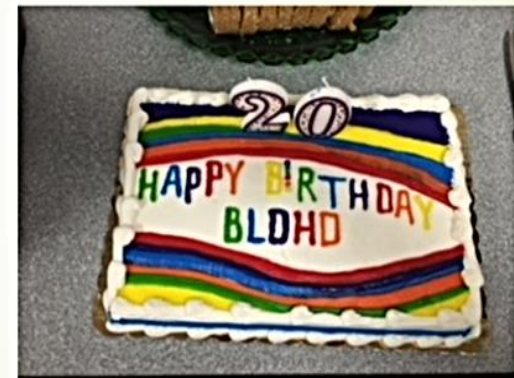
Joshua Meyerson, MD, MPH

Celebrating our 20th Anniversary

In 1996, the Benzie-Leelanau District Health Department was established marking 2016 its 20th year in service. When the Department first opened, the main office was located in a small room on the lower level of the Benzie County Governmental Center, in Benzonia, and then moved to another location in Honor for a short period of time following. One year later, the Benzie Community Resource Center was built, and the Health Department moved in to that location and has been there ever since, sharing its space with other community organizations.

Services for Leelanau County, specifically Environmental Health, were conducted out of a small office building in Grelickville. Due to limited space, personal health services were conducted through outreach clinics such as immunizations and WIC at township and fire halls throughout the county. In November of 1998, the department moved into its current location at the Connie Binsfield Resource Center in Lake Leelanau.

Some of the individuals who were there on the first day of the Health Department's opening are still with the department to this day. Can you guess who those individuals are in this collage of staff headshots taken in 1996?

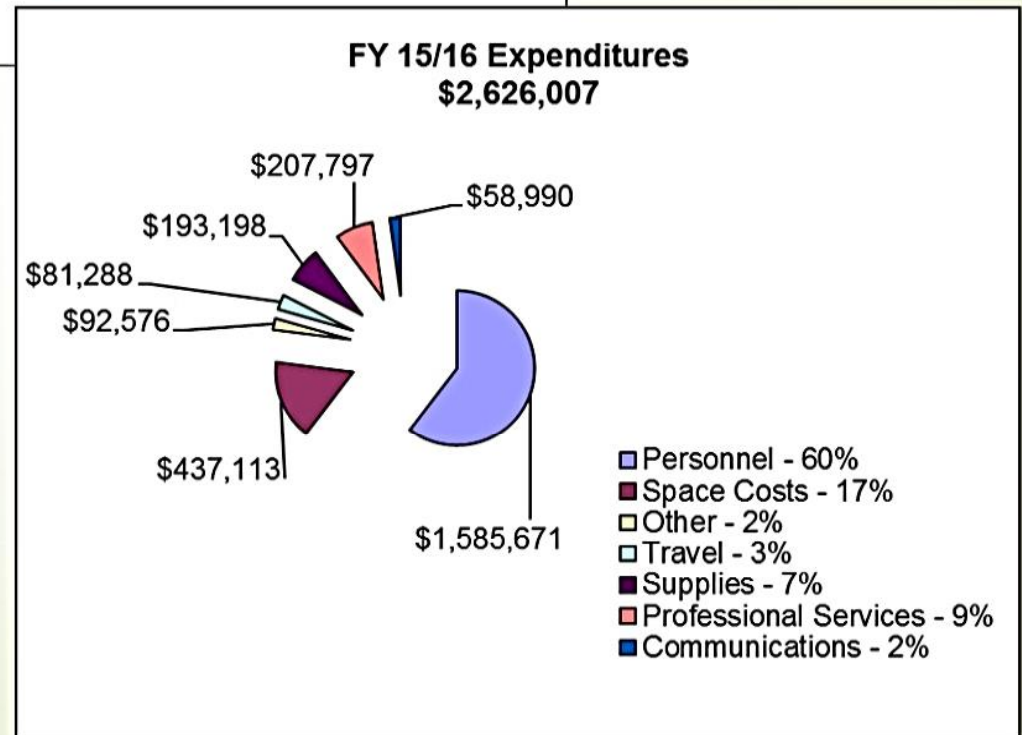
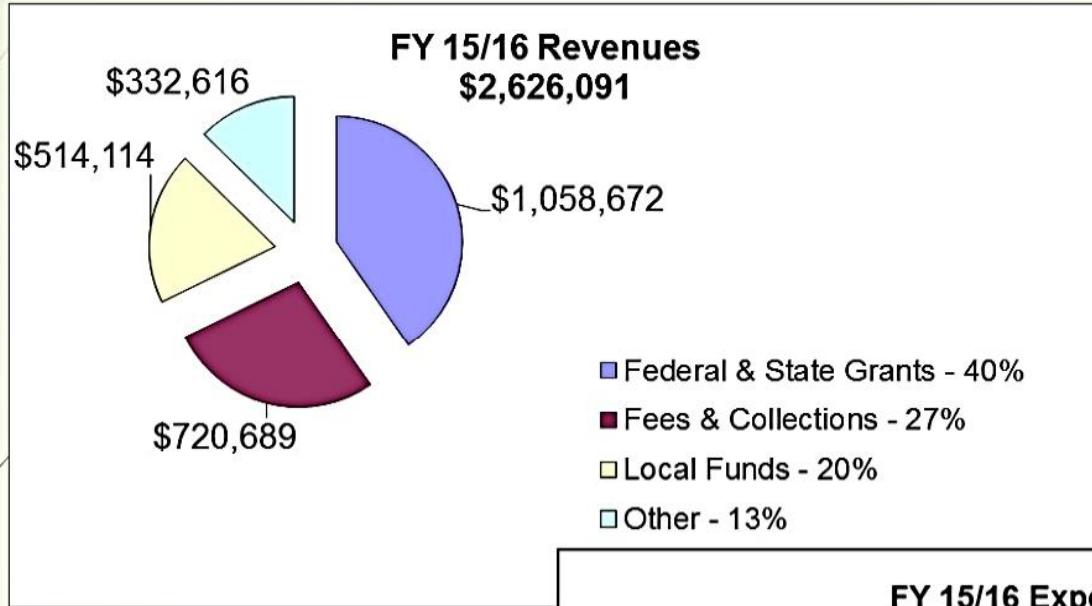


"Benzie-Leelanau District Health Department has been a special place to work from the beginning. Our employees are connected to the Benzie and Leelanau Communities and genuinely care about doing what is best for our neighbors. We respect and inspire each other, have fun together, and in many ways, consider our co-workers as family. I believe that is why we have so many long-time employees." ~ Michelle Klein

2016 Highlights

- **Benzie Office Renovation:** The Benzie Community Resource Center underwent remodeling to accommodate Northwest Michigan Health Services Inc. as new tenants to the building. The Environmental Health and Administrative Divisions moved to the lower level so that the upper level could be used for all health services, including primary care, dental, behavioral health and health department clinical services.
- **Strategic Planning:** In December, all staff participated in a strategic planning session facilitated by the Northern Michigan Public Health Alliance, under the Technology of Participation Process. This process resulted in updating the BLDHD Strategic Plan, initially developed in 2012, for the next 3 years when the process will be undertaken again in December 2020.
- **New Medical Director:** Dr. Joshua Meyerson began his duties as the new Medical Director for the Department on January 1, 2016. Dr. Meyerson is also the Medical Director for the Health Department of Northwest Michigan and District Health Department No. 4.
- **Awards:** The Department was a recipient of the following awards in 2016:
 - The Alliance for Immunization in Michigan (AIM) Outstanding Achievement Award
 - The Michigan Department of Health and Human Services Director's Award for its efforts with Northern Michigan Public Health Emergency Preparedness.
- **Grants:** The Department participated in several regional, grant funded collaborations including:
 - Robert Wood Foundation Center for Public Health Sharing, Cross-Jurisdictional Sharing Grant.
 - MDHHS Health Innovation Grant, through the NMPHEP Initiative.
 - Regional Immunization Grant along with 31 other counties.
- **Accreditation:** The Department went through a 3 year on site review as part of its continuous accreditation through the Michigan Department of Health and Human Services.

Financial Summary





Notable Activities in 2016

Administrative Activities

- **Regional Insight Software:** Along with three other health departments, BLDHD is working toward implementing a new electronic medical record software that will increase efficiencies while streamlining procedures.
- **Private Billing:** This year, the Department began billing private insurance for services to better serve both the insured and uninsured in our communities.

Environmental Health Activities

- **DEQ Accreditation:** The EH Division received accreditation from the Michigan Department of Environmental Quality through meeting the standards and requirements for maintaining viable environmental health services to Benzie and Leelanau residents and establishments.
- **Frozen Strawberries Recall:** Environmental Health staff responded to investigate food establishments that received selected shipments of frozen strawberries that were accidentally contaminated with substances known to cause food-borne illnesses. Coordination occurred with the Michigan Department of Agriculture, as well as Personal Health staff, to manage the situation and resolve the incident with no further harm to the public.

Emergency Preparedness Activities

- **Implementation of NMPHEP:** The NMPHEP (Northern Michigan Public Health Emergency Preparedness) Team was underway in 2016 after a series of meetings that resulted in a final strategy for configuring its structure amongst the three health departments and the roles and responsibilities of those integral to its operation. A significant achievement in 2016 was the purchase of a trailer and equipment through a grant for use as a mobile medical response unit for BLDHD .


- **Drive Thru Flu Clinic/ Exercise:** In November, staff at the Leelanau office conducted a drive-thru flu clinic in the parking lot. The event occurred in the evening and included staff from BLDHD, Benzie County CERT, and GTB to dispense flu vaccines to people while they remained in their vehicle. The operation also served as an exercise to test and evaluate plans and procedures in the event of a real emergency, such as a pandemic influenza, to limit interaction of the public in such a scenario.



- **GTB Closed POD Exercise:** Staff participated along with GTB in supporting their efforts to dispense flu vaccine to tribal members at the Medicine Lodge in Peshawbestown. The exercise provided an opportunity for BLDHD to test communications systems, practice public information, and contact local pharmacies.
- **Mass Casualty & Special Pathogenic Table Top Exercise:** Staff participated in a tabletop exercise with local emergency planning partners from Leelanau County and Benzie County to discuss the response to a mass casualty scenario and also involving a public health threat with a victimsuspicious of having a highly infectious disease.
- **Leelanau County Tornado Drill:** Staff participated in the annual tornado drill facilitate by the Leelanau County Emergency Management Office by reporting to the Local Emergency Operations Center and working together with fire, police, and other agencies to care for those injured or affected by a tornado that touched down at Suttons Bay High School.
- **Benzie County Active Shooter Exercise:** Staff participated along with Benzie County emergency responders in an exercising involving an active shooter. This was an opportunity to help in the development of plans and procedures in response to this type of incident that could occur at either health department office.



Personal Health Activities

- **WIC Project FRESH:** In 2016, \$2,692 worth of coupon savings was allotted towards the purchase of local produce from participating farmers markets under the Project FRESH (Farm Resources Expanding and Supporting Health) initiative. Project FRESH is an educational program that provides WIC participants with coupons to purchase locally grown fresh fruits and vegetables at participating farmers markets and roadside stands, as well as receive nutrition education and Ideas through MSU Extension.
 - **HIV Rapid Testing:** Clients are now able to be tested for HIV and receive results in 20 minutes, improving the client experience and ensuring timely referral to a health care provider. Funding from the Michigan Department of Health and Human Services allows us to offer the HIV test at no charge.
 - **Private Insurance Billing:** Private insurance billing for immunizations and reproductive health services has increased access to these services for individuals in our community. All vaccines for children, adults and seniors are available. Vaccines and reproductive health care continue to be available for individuals who are uninsured.
 - **School Based Vaccine Clinics:** The Health Department partnered with Benzie Central Community Schools and Glen Lake Community Schools to pilot off-site vaccine clinics at the schools. Lessons learned from these outreach clinics will be used to expand immunizations services in additional community locations.
 - **Regional Community Health Assessment:** The Health Department worked alongside Munson Healthcare, District Health Department #10, Grand Traverse County Health Department, and Health Department of Northwest Michigan to complete a regional health assessment. Through community forums, surveys, and data collection information on over 100 health indicators were assessed. A report on the findings from this community health assessment is available on the Benzie-Leelanau District Health Department website and at <https://www.munsonhealthcare.org/CHNA>
- 

Partnerships and Collaborations

2016 was a year of strengthening our relationships and partnership with community members and coalitions. The Department closely works with many organizations within Benzie and Leelanau counties, as well as across the region to collect and share information towards a more efficient and effective delivery of services. The Department thanks the many organizations and collaborative groups who have helped in achieving it's mission through the years and includes those such as, but not limited to:

Northern Michigan Health Coalition
Northern Michigan Public Health Alliance
Northern Michigan Public Health Emergency Preparedness
Northwest Michigan Health Services, Inc.
Northern Michigan Community Health Innovation Region
State of Michigan, and its agencies
County Emergency Management Programs
Local Emergency Planning Teams
Benzie Human Services Collaborative
Leelanau Family Coordinating Council
Benzie Area Christian Neighbors
Leelanau Christian Neighbors
Leelanau Early Childhood Development Commission
Local schools
Centra Wellness Network
Grand Traverse Band
Leelanau Clean Water



2016 Service Records

Personal Health	Type of Service	No. of Clients	No. of Visits
	Immunizations	423	671 (1134 doses)
	Vision Screens		2401
	Hearing Screens		1550
	Children's Special Health Care		91
	Healthy Futures	200	250
	Maternal and Infant Health Program	190	1405
	WIC/Migrant WIC/WIC Peer Counseling		1761
	Immunization Waiver Appointments	50 appts	
	Reproductive Health	188	696
Environmental Health			
Environmental Health	Type of Service	No. Performed	
	Vacant Property Evaluations	138	
	Campground Licensing and Inspections	29	
	Public Swimming Pool Licensing and Inspections	40	
	Septic Pumper Truck and Disposal Site/Storage Inspection	27	
	Rabies and West Nile Virus Testing	12	
	Public Swimming Beach Monitoring	11	
	Temporary and Fixed Food Service Inspections	475	
	Sewage Permits	310	
	Remodel Septic Reviews	27	
	Point of Sale Inspections	369	
	DHHS Facility Inspections	12	
	Well Permits	289	
Type II Non-community Water System Inspections	42		

Reportable Communicable Diseases (3 yrs)

Disease	2016	2015	2014
Animal Bites	52	31	46
Animal Rabies (Bat)	0	0	1
Botulism	0	1	0
Campylobacter	2	4	3
Chickenpox	10	5	5
Chikungunya	1		
Chlamydia	84	83	78
Coccidioidomycosis	1	0	0
Cryptosporidiosis	1	1	2
Dengue Fever	0	1	0
E. Coli	1	0	3
Ehrlichiosis Anaplasma Phagocytophilum	0	1	0
Giardiasis	3	1	4
Gonorrhea	3	4	3
Guillain-Barre Syndrome	0	0	1
Haemophilus Influenza	1		
Hepatitis B	5	4	3
Hepatitis C	18	22	20
Histoplasmosis	0	5	0
HIV/AIDS	0	6	18*
Lyme Disease	5	4	1
Measles		0	3
Meningitis-Aseptic	4	4	6
Meningitis-Bacterial	2	3	1
Nontuberculous mycobacteria	7	9	n/a
Norovirus		0	1
Pertussis	3	5	18
Salmonellosis	7	7	6
Shigellosis		0	0
Streptococcus pneumoniae	6	3	3
Streptococcal Disease, Grp A	1	2	
Syphilis	0	0	1
Tuberculosis	0	0	0
Varicella-Zoster (VZ) Infection	12	6	8

Health Department Employees

Recognition of Credentials and Years of Service

Vicky Kriskywicz, CHW, 19 yrs

Roberta Besey, RN, <1 yr

Debbie Aldridge, RN, 20 yrs

Dodie Putney, BS, 20 yrs

Eric Johnston, BS, RS, * , 20 yrs

Heidi Roper, 20 yrs

Jennifer Floye-Payne, 1 yr

Jenny Shafer, RN, BSN, CLS, 3 yrs

Kris Malkowski, 15 yrs

Marc Grossnickle, BS, RS, 8 yrs

Rachelle Stapleton, RD, IBCLC, BS, 10 yrs

Ruth Griner, LPN, CHW, 20 yrs

Sanna Johnson, AA, < 1 yr

Tom Fountain, BS, RS, 20 yrs

Amanda Stowe, LMSW, IMH-E(II), 4 yrs

Autumn Jurek, RN, IBCLC, 3 yrs

Bill Crawford, BS, MS, RS, 20 yrs

Clay McNitt, BS, RS, 20 yrs

Michelle Klein, RN, MA, PHC, 20 yrs

Sharon Husted, 19 yrs

Stephanie Burns, BSN, RN, ZA, < 1 year

Tom Rademacher, RS, 20 yrs

Vicki Houdek, 16 yrs

Katie Hefner, 3 yrs

Jan Frazee, NP, WHP, 6 yrs

Jim Reardon, BS, MS, MCP, 3 yrs

Lisa Peacock, MSN, RN, WHNP-BC,

Joshua Meyerson, MPH, MD, 1 yr

* DEQ Certified Waterworks System

"In spite of the challenges of being a small health department there have been many positive changes over the years with an increase in services for the residents in both Benzie in Leelanau county." ~ Ruth Griner

Snapshots



Michelle Klein, Debbie Aldridge, Heidi Roper



Staff receiving certificate of accreditation.
From L to R: Dodie Putney, Lisa Peacock, Orlando Todd,
Michelle Klein, Tom Fountain, Joshua Meyerson



Tom Fountain, Jim Reardon



Tom Rademacher




Lisa Peacock, Rachelle Stapleton



Benzie-Leelanau District Health Department

'Caring For Our Communities'



A special thanks to Traverse City Area Public Schools Printing Dept in printing copies of this report.